



MAKE
—
HAPPEN

MAKE
YOUR FUTURE
HAPPEN.

Our Partner Universities



Exploring Higher Education



Identify the benefits of HE



Explore the different options at a HE institution



Identify your personal choices for higher education

Levels of Qualifications

Higher Education

Level 8

Doctorate/ PhD

Level 7

Postgraduate Degrees

Level 6

Top up Honours Degree

Level 5

Honours Degree

Degree Diploma

Level 4

Integrated Masters Degree

Foundation Degree

Degree Certificate

Degree Apprenticeship

Higher Apprenticeship

Higher Apprenticeship

Higher Apprenticeship

Higher Apprenticeship

NVQ Level 5

Higher Apprenticeship

NVQ Level 4

Secondary/
Further Education

Level 3

A levels

T levels

BTEC

NVQ Level 3

Level 2

GCSE (grades 4 – 9)

BTEC

OCR

Foundation/
Higher Diploma

Intermediate Apprenticeship

NVQ Level 2

Level 1

GCSE (grades 1 – 3)

BTEC

NVQ Level 1

Activity 1



How confident are you right now, if you had to pick a uni course? (out of 5)



What are 3 pros and 3 cons of going to University?



Chat to the person next to you

Why go to University?

JOB PROSPECTS

MEET NEW PEOPLE

TRANSFERABLE SKILLS

EXPERIENCES

SOCIETIES

STUDENTS' UNION

LIFE SKILLS

TRAVELLING

Career Benefits

Compared to non-graduates, university graduates are more likely to be:

- Employed- *around 60% of graduate employers will recruit graduates from any degree discipline*
- In a high-skilled job
- Earning significantly more

Average salary (2024) =



Non-graduate



Graduate

How do I choose...?



Study a subject you enjoy!

May be influenced by your **specific career plans**
e.g. nursing

Keep it general - allows you to access lots of different careers (e.g. biology).



Activity 2



Think of 3 reasons a course will interest you



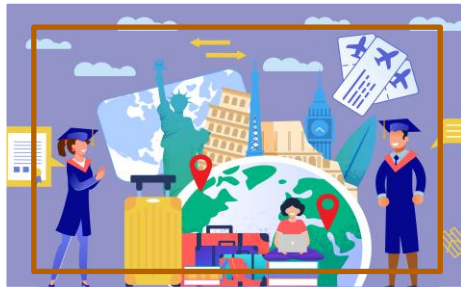
Chat to the person next to you

What do you think of when you imagine a university?



What is a University?

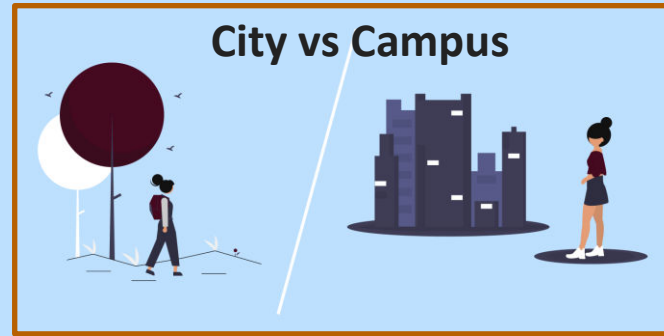
Year Abroad



Study in the field



City vs Campus



Around the world

Industry Placement

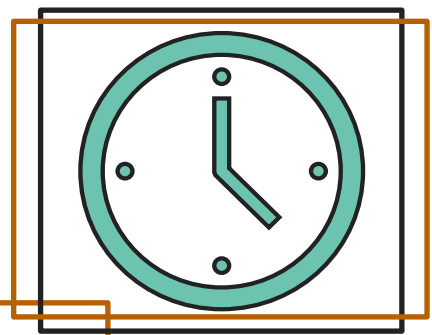


Study in a lab



Collaborate

What is a University



Study part-time



On Campus

Whatever you
need it to be...

With support



Study Online



Live at home

Activity 3



Think of 3 reasons a university/location will interest you



Chat to the person next to you

Choosing the right university



Teaching and learning style:

Online vs in-person

Teaching facilities



Location:

City

Rural

Campus-based

Accessibility

Cultural events



Size:

Number of students

College-based?

Age of learners



Culture and facilities:

Student Union

Sports facilities

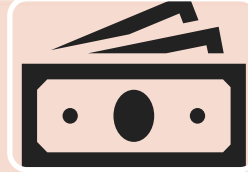


Where do graduates go?:

Progression information

Links with companies

Research degrees



Fees & funding:

Scholarships & bursaries

Extra course costs

Year abroad



Living costs:

Local area

Accommodation

Transport

On-campus services

Why go to University?



<https://vimeo.com/165261094>

[Why Go to University? \(youtube.com\)](https://www.youtube.com/watch?v=165261094)

Any questions so far?



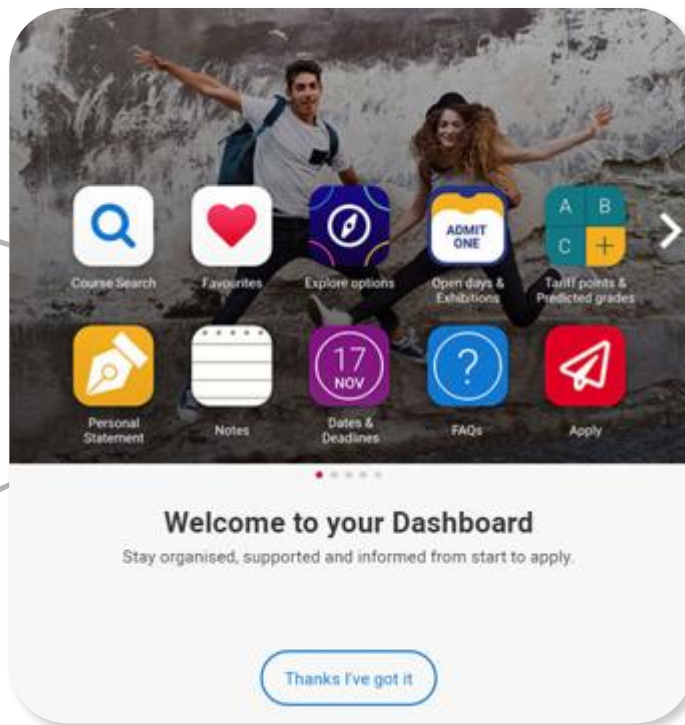
Keep all your choices organised...

Tools:

Tools to search, favourite, shortlist, plan your diary, and build application.

Discover careers:

Look at job profiles and subject guides



Find your UCAS points:

Turn your grades into Tariff points

Speak to students:

Use UniBuddy to chat online & ask questions of students studying the course you are interested in



Tools to try out now



| Applying - key facts

- **Register with UCAS** via the Hub
- Use your username and password to apply **online**
- Buzzword from your college
- Students can add up to **5 choices**, unless they're applying to study medicine, veterinary medicine/science, dentistry – then it's **4 choices**
- Students **can't apply to BOTH** Oxford and Cambridge
- Applying **costs** £28.95 (Students receiving free school meals pay £0.00)
- Universities **can't see** other choices when you apply

Key Dates for 2025 applicants

15 October 2024	Applications for Oxford, Cambridge and most courses in medicine, dentistry, and veterinary medicine/science should arrive at UCAS by 18:00 (UK time)
14 January 2026	Equal consideration deadline (by 18:00 UK time)
	Closing date for most conservatoires' dance/drama/musical theatre applications
March 2025	Student Finance England Applications Open
	Advisory deadline
13 May 2026	Deadline to reply to your UCAS offers (for most applicants)

Course profiles on UCAS

Writtle University College

Animal Science (Bioveterinary Science)
Writtle University College
Main Site

BSc (Hons) 3 years
Full-time 09/2024

80-96
UCAS Tariff Points

UNIVERSITY OF LIVERPOOL

Veterinary Science
University of Liverpool
Main Site

BVSc 5 years
Full-time 23/09/2024

96-144
UCAS Tariff Points

Royal Veterinary College
University of London

Biological Science (Wildlife Health Science)
Royal Veterinary College, University of London
main site

Master in Science (with Honours) – MSci (Hon) 4 years
Full-time 24/09/2024

80-144
UCAS Tariff Points

Do you know what your Tariff Points are?

My qualifications

Pearson BTEC Level 3 National Extended Diploma (first teaching from September 2016) ✕

animal science MMM ▼

Points 96

My qualifications

Pearson BTEC Level 3 National Extended Diploma (first teaching from September 2016) ✕

animal science DMM ▼

Points 112

BTEC Level 3 Extended Diploma*	UCAS Point	A Level Grades
D* D* D*	168	A* A* A*
D* D* D	160	A* A* A
D* D D	152	A* A A
D D D	144	A A A
D D M	128	A A C
D M M	112	A C C
M M M	96	C C C
M M P	80	C C E
M P P	64	C E E
P P P	48	E E E

How do I find out if a university is the right one for me?



ATTEND OPEN DAYS IN-PERSON

Speak to current undergraduate students at Open Days

Prepare questions to ask – for example, what’s your course like?

Join tours and attend workshops taking place on the day



WAYS TO FIND OUT WITHOUT VISITING:

Virtual Open Days

League tables and rankings

Compare sports facilities and societies

Compare graduate outcomes

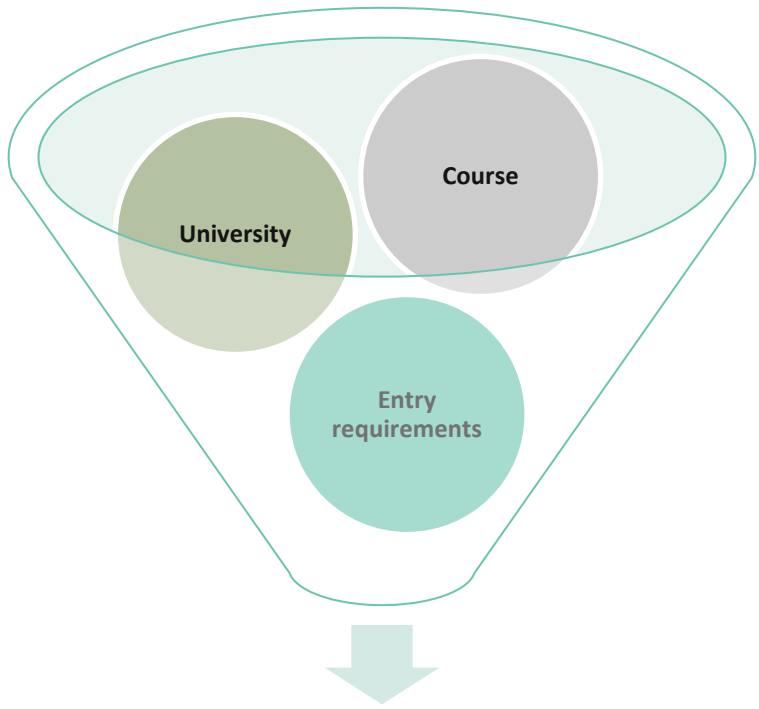
Explore the specific uni website

Talk to them! Ask questions through their live chat/social media/Uni Buddy

Student videos and blogs/vlogs

Google Maps and Street View

What do I do with this information?



Top 5 choices

- Have a 'safety' choice
- Give yourself a bit of variety
- Remember UCAS Extra and Clearing

Rank it

Courses you are considering /researching

Courses I am considering

Decision-making criteria	Animal Science at University A	Animal Biology at University B	Animal Biology at University C	Animal Conservation Science at University D	Animal Biology at University E
Location	5	1	3	5	3
Academic facilities	3	2	4		
Specialist modules					
Teaching style					
Assessment style					

Criteria that is important to you

Activity 4



Look back at your list of reasons. Have they changed?



How confident do you feel in making uni decisions now (out of 5)?



Set yourself 2 x things you are going to do / research next

MAKE
—
HAPPEN

VISIT OUR WEBSITE:
WWW.MAKEHAPPEN.ORG

FOLLOW US ON:

