



**MAKE**  
—  
**HAPPEN**

# Post-16 Options

# Our Partner Universities



# Aims of today's session



Understand what your options are after year 11



Compare the similarities and differences between the different routes



Reflect on which option is the best for you and what you need to do next

# What do you already know about options after Year 11?

# Question 1

**After year 11, you choose between studying BTECs at college or A Levels at sixth form.**

**True**

**False**

## Question 2

**I only need a pass in GCSE English and Maths if I plan on studying them at A Level.**

**True**

**False**

## Question 3

The term 'Further Education' means studying at university.

True

False

## Question 4

**You need to do A Levels to get into university.**

**True**

**False**

## Question 5

**What level of qualification are you currently studying towards (GCSEs grades 4-9)?**

**Level 1**

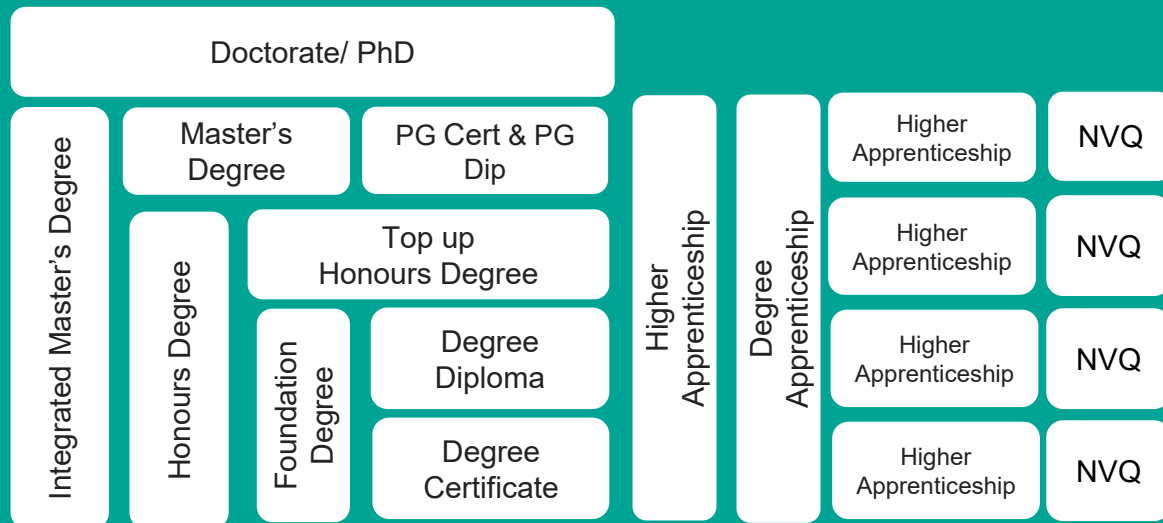
**Level 2**

**Level 3**

**Level 4**

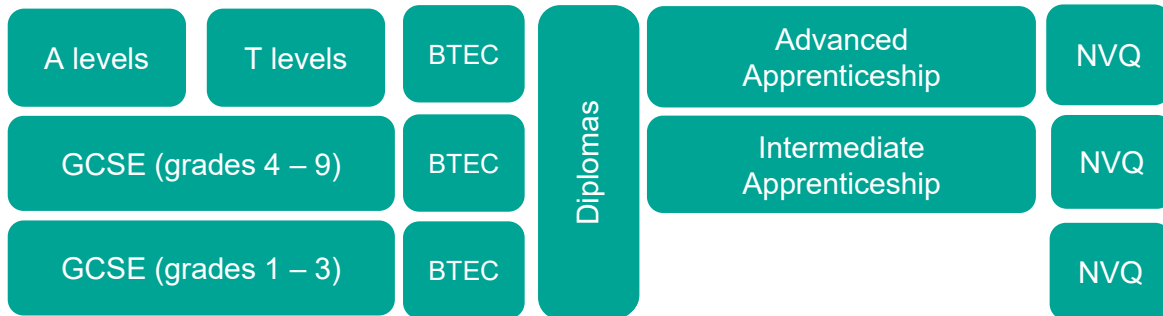
# Higher Education

- Level 8
- Level 7
- Level 6
- Level 5
- Level 4



# Secondary/ Further Education

- Level 3
- Level 2
- Level 1



## Glossary

**BTEC:** Business and Technology Innovation Council

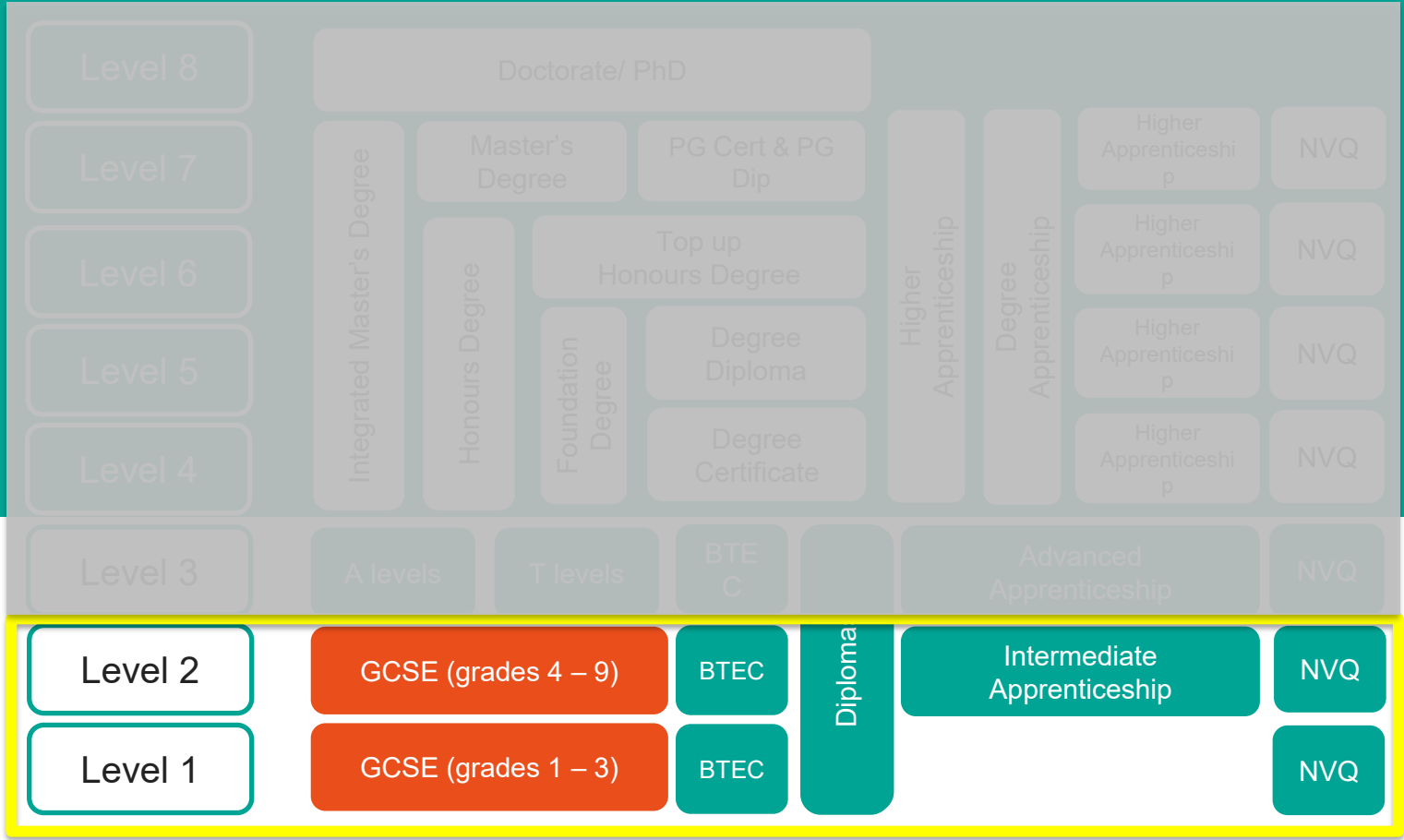
**NVQ:** National Vocational Qualification

**PG Cert:** Postgraduate Certificate

**PG Dip:** Postgraduate Diploma

# Higher Education

# Secondary/ Further Education



**Glossary**

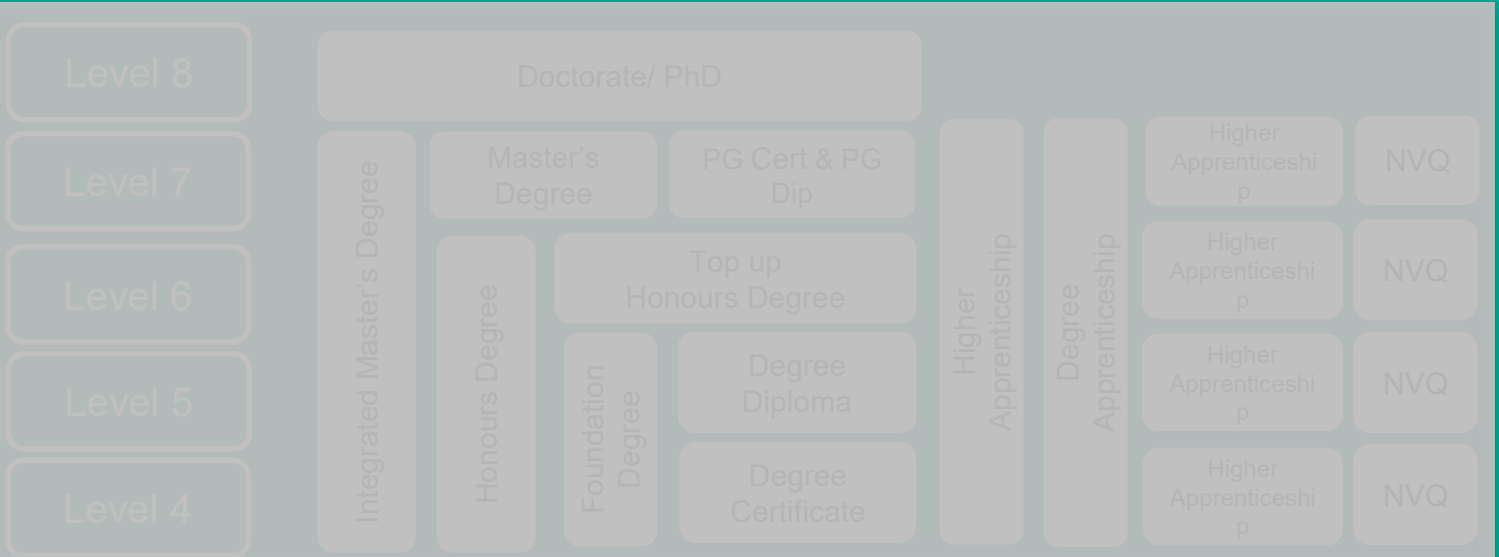
**BTEC:** Business and Technology Innovation Council

**NVQ:** National Vocational Qualification

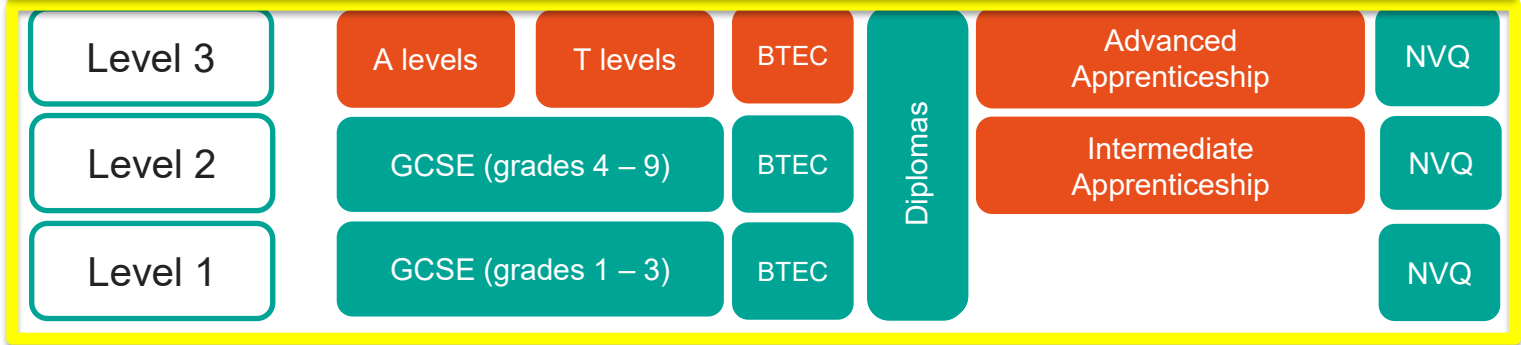
**PG Cert:** Postgraduate Certificate

**PG Dip:** Postgraduate Diploma

# Higher Education



# Secondary/ Further Education



**Glossary**

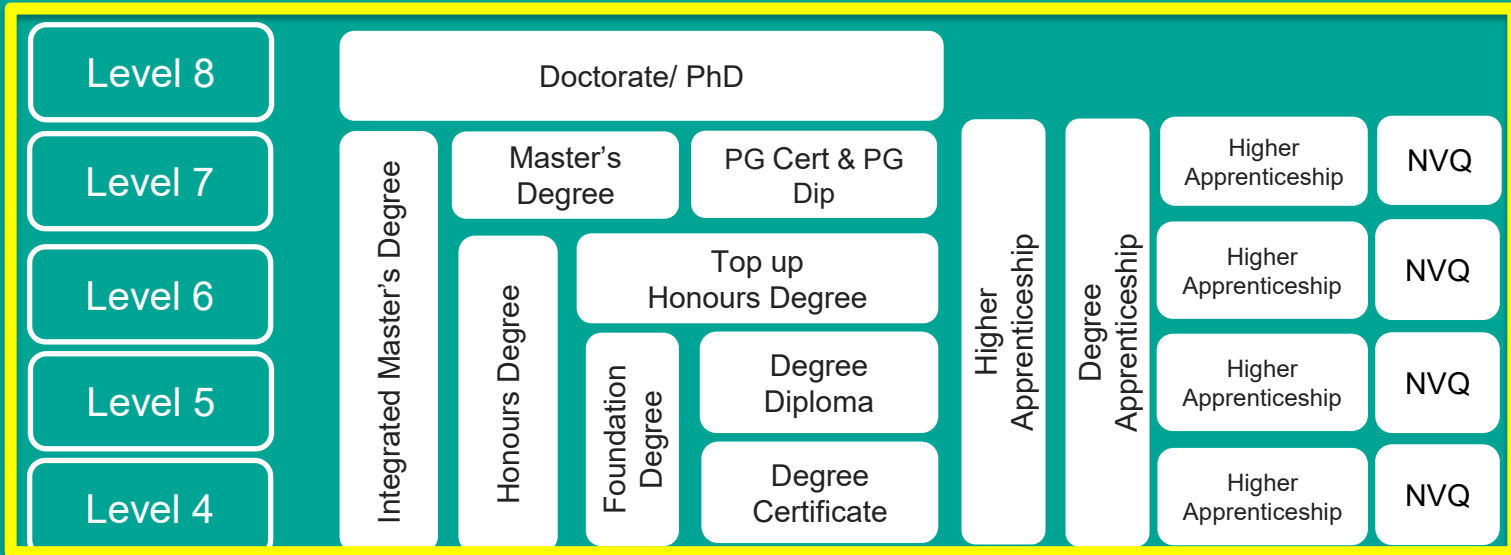
**BTEC:** Business and Technology Innovation Council

**NVQ:** National Vocational Qualification

**PG Cert:** Postgraduate Certificate

**PG Dip:** Postgraduate Diploma

# Higher Education



# Secondary/ Further Education



## Glossary

**BTEC:** Business and Technology Innovation Council

**NVQ:** National Vocational Qualification

**PG Cert:** Postgraduate Certificate

**PG Dip:** Postgraduate Diploma



# Options after year 11

**A Levels**

**Level 3 BTECs**

(or other vocational qualifications)

**T Levels**

**Apprenticeships**

## Match up task

**A Levels**

The equivalent of 3 A levels. 80% in the classroom, 20% on a 45-day industry placement.

**Level 3 BTECs**  
(or other vocational qualifications)

Usually more practical work-related subjects with coursework or project work. Equivalent of 1-3 A levels depending on type.

**T Levels**

Earn whilst you learn. 80% on the job training, 20% studying.

**Apprenticeships**

Theoretical classroom-based learning. Usually study 3 subjects at sixth form or college

# A Levels

- Theoretical classroom-based learning.
- Usually study 3 subjects at sixth form or college



# Examples of A level courses

- 3D Design and Architecture
- Accounting
- Business
- Computing
- Drama & Theatre Studies
- Economics
- Engineering
- Film Studies
- Fine Art
- Graphic Design
- Law
- Photography
- Politics
- Psychology
- Sociology
- Statistics
- Textiles



## Level 3 BTECs

(or other vocational qualifications)

- Usually more practical work-related subjects with coursework or project work.
- Equivalent of 1-3 A levels depending on type.



## Examples of vocational courses (BTECs, UAL, City and Guilds etc)

- Animal Care
- Animation
- Art and Design
- Business
- Electric/Hybrid Vehicle Routine Maintenance
- Fashion Business and Retail
- Forensics and Criminal Investigation
- Games Development
- Health and Social Care
- Illustration and Graphic Design
- Performing Arts
- Policing
- Sport and Exercise Science
- Visual Design and Architecture



# A Levels vs. BTECS (or other vocational qualifications)

A Levels	BTEC
Academic qualification	Vocational qualification
More traditional subjects – Maths, History, Psychology, Biology	Variety of courses ranging from computing, forensic science, engineering, hair and beauty, childcare, business etc.
2 years to complete	1-2 years to complete
Choose 3 or 4 A Levels	Choose 1 BTEC*
Mix of coursework and exam (80% exam, 20% C/W)	Mainly coursework but may have some exams

\*Some 6<sup>th</sup> form/colleges allow you to do a mixture of both A Levels and BTEC's

## Comparing levels of qualification

- You need to look carefully at the level of qualification you are applying for. This will affect the entry requirements and how long they will take to complete.
- Sometimes you'll need to start from a level 1, especially if it's a subject you've never studied before.



# Comparing levels of qualification

Level 1

## Sport and Active Leisure **Level 1** Diploma

Duration	Age Group	Study	Start	Available Locations
<b>1 YEAR</b>	<b>SCHOOL LEAVERS</b>	<b>FULL TIME</b>	<b>01/09/2026</b>	<b>Southend Campus</b>

- Overview
- Entry Requirements
- Course Structure
- Assessment & Feedback
- Course Cost
- What Next...

### Overview

An ideal course if you want to gain knowledge of the fundamental aspects of sport in preparation for further study.

Application Process

### Entry Requirements

- An Entry 3 qualification or GCSEs x 2 at grade 2/E in MATHS or ENGLISH
- Successful attendance at transition event



# Comparing levels of qualification

Level 2

## Sport BTEC **Level 2** First Extended Certificate

Duration	Age Group	Study	Start	Available Locations
<b>1 YEAR</b>	<b>SCHOOL LEAVERS</b>	<b>FULL TIME</b>	<b>01/09/2026</b>	<b>Southend Campus</b>

- Overview
- Entry Requirements
- Course Structure
- Assessment & Feedback
- Course Cost
- What Next...

### Overview

A busy and practical sport course to support progression onto the level 3 sports coaching or sports science course. There is practical sessions weekly with sports coaching a priority. This suits learners who learn practically and are ready to work hard to achieve on and off the field. The course runs the same as level 2 Football academy.

Application Process

### Entry Requirements

Level 1 qualification or GCSEs x 2 at grade 3/D in MATHS or ENGLISH



# Comparing levels of qualification

Level 3

## Sport and Exercise Sciences **Level 3** Extended Diploma

Duration

**2 YEARS**

Age Group

**SCHOOL LEAVERS**

Study

**FULL TIME**

Start

**01/09/2026**

Available Locations

**Southend Campus**

Overview

Entry Requirements

Course Structure

Assessment & Feedback

Course Cost

What Next...

Success Stories...

### Overview

This course will prepare you for a career in the sport industry or as a stepping stone to a Higher Education course at University. The Extended Diploma is equivalent to three A Levels.

Application Process

### Entry Requirements

- You will need a minimum of 4 GCSEs at grade 4-9, including maths, English, science and physical education

or

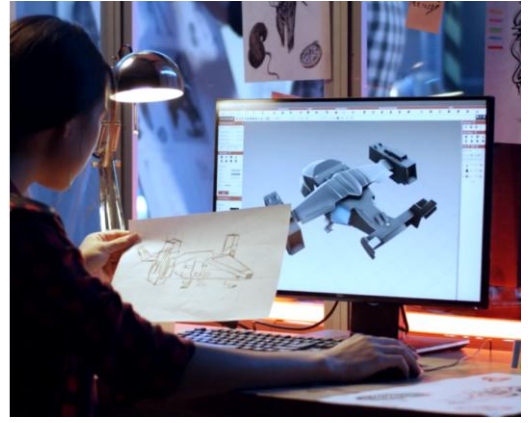
- [Sport and Active Leisure Level 2 Diploma](#) and grades 4-9 in maths and English





# T Level subjects

- Agriculture, environmental and animal care
- Business and Administration
- Catering (start date TBC)
- Construction
- Craft and Design
- Digital
- Engineering and Manufacturing
- Education and Early years
- Hairdressing, Barbering and Beauty Therapy
- Health and Science
- Legal, Finance and Accounting
- Media, Broadcast and Production



## Let's hear from a local T Level student!



# Where to study a T Level in Essex?

## T-LEVELS

### FIND YOUR NEAREST T LEVEL

Search for schools and colleges who are delivering T Levels

SS16 5BA	All T Level courses ▼	Search
----------	-----------------------	--------

#### **SOUTH ESSEX COLLEGE OF FURTHER AND HIGHER EDUCATION**

1 mile

Basildon | SS14 3AY [How do I get there?](#)

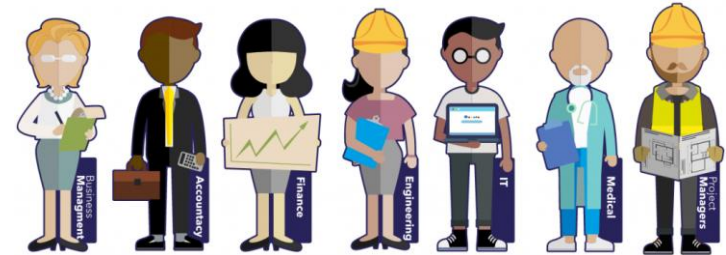
**From September 2022 onwards:**

- Digital Production, Design and Development

[Visit their website](#)

# Apprenticeships

- Earn whilst you learn.
- 80% on the job training, 20% studying.





Apprenticeships are a great way to earn money whilst you study.



They are real jobs, with a contract of employment working alongside experienced staff, gain job specific skills, holiday leave and on-the-job training.



On-the-job training makes up about 80% of apprentice working hours.



The other 20% of working hours is spent formally studying for a qualification, for example in a classroom, online or at your place of work.

# What is the minimum wage per hour for an apprentice?

£3.90

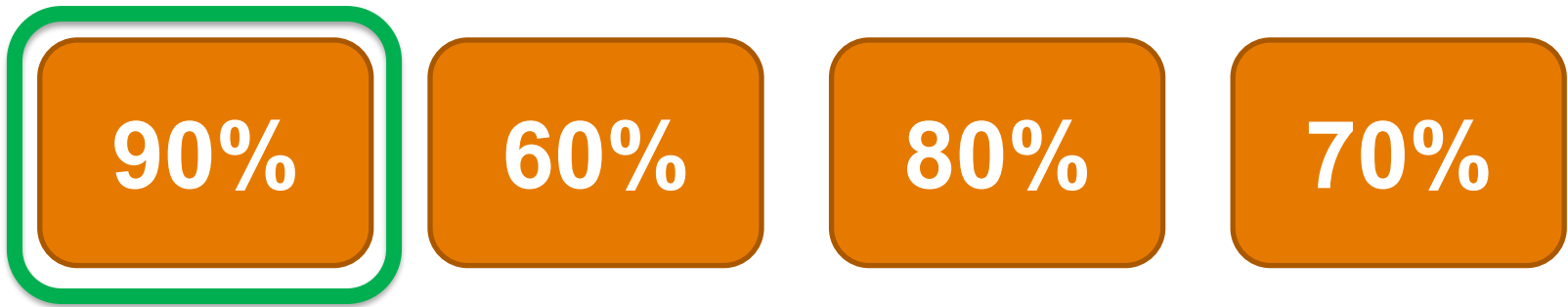
£4.81

£7.55

£10.20



# What percentage of apprentices stay in employment after their apprenticeship?



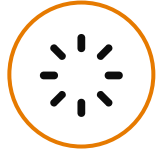
# | What apprenticeships are available?



Accounting



Aviation



Horticulture



Architect



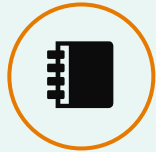
Creative & Digital



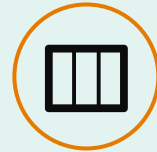
Teaching



Cyber Security



Surveying



Project management



Nursing



Dental Nursing



Hospitality



Hairdressing



Legal Services



Journalism

...and many more

# Let's hear from a local apprentice!



# T levels v Apprenticeships

T Levels	Apprenticeships
Largely classroom based with an industry placement 80% Classroom 20% workplace	80% workplace and 20% classroom
Employer not expected to pay the student	Gets paid for their industry work
Offers broader course content and can specialise later on	Narrower and more focused on a specific job

*Both are graded Distinction\*, Distinction, Merit and Pass.*

# Sixth form vs College

## How many sixth forms and colleges can you name?



# Sixth forms and colleges near you

This map shows all the 6<sup>th</sup> forms and colleges in Essex:



# What's the difference? Sixth Form vs. College

Sixth Form	College
Usually academic – A Levels and some BTECs	Usually a large range of courses – A levels, BTECs and apprenticeships
No uniform or business dress	Usually no uniform <i>(some specific courses have one)</i>
With own age group, all studying Level 3 courses	Age 14 to adult learners, any level of course
Hundreds of students	Thousands of students
5 days per week with some study periods	Depends on course, often not full days/week
More like school structure	Less structured, sign in and out

# Typical school timetable

	MON	TUE	WED	THU	FRI
8:30-9:00	<b>REGISTRATION</b>				
9:00-10:00	Technology	Technology	Maths	PE	English
10:00-11:00	Science	Science	English	Science	Maths
11:00-11:30	<b>BREAK</b>				
11:30-12:30	History	Maths	Technology	Science	PSHE
12:30-1:30	Business	English	Science	ICT	History
1:30-2:05	<b>LUNCH</b>				
2:05-3:05	ICT	Business	History	ICT	Business

# Typical Sixth Form timetable

	MON	TUE	WED	THU	FRI
8:30-9:00	REGISTRATION				
9:00-10:00	History		Biology		Tutorial
10:00-11:00	History		Biology	Maths	Supervised study
11:00-11:30	BREAK				
11:30-12:30		History	Supervised study	Maths	Biology
12:30-1:30		PE/Sport		Supervised study	Biology
1:30-2:05	LUNCH				
2:05-3:05	Maths	Maths		History	

# What do school & post Year 11 education have in common?



## Academic support

Class teachers, learning assistants, support staff



## Pastoral support

Safeguarding teams, wellbeing advisors, counsellors



## Student bursaries

Including free school meals, travel



## Study areas

Libraries, student learning spaces

# Recap

## A Levels

- Theoretical classroom-based learning.
- Usually study 3 subjects at sixth form or college

## Level 3 BTECs

(or other vocational qualifications)

- Usually more practical work-related subjects with coursework or project work.
- Equivalent of 1-3 A levels depending on type.

## T Levels

- The equivalent of 3 A levels.
- 80% in the classroom, 20% on a 45-day industry placement.

## Apprenticeships

- Earn whilst you learn.
- 80% on the job training, 20% studying.

## Identifying the right option for you



[makehappen.org/guide/advice-for-your-career-path/](https://makehappen.org/guide/advice-for-your-career-path/)

## Identifying the right option for you

**Subject  
choices**

**Location**

**Facilities**

**Extra-  
curricular  
opportunities**

**Careers or  
UCAS  
support**

**Reputation  
and results**

## I know what career I want to do or which subjects I want to study

- Work **backwards** to check that you would have fulfilled the entry requirements at each stage.
  - [informedchoices.ac.uk](https://informedchoices.ac.uk)
  - [ucas.com](https://ucas.com)
  - [tlevels.gov.uk/students](https://tlevels.gov.uk/students)
  - [gov.uk/apply-apprenticeship](https://gov.uk/apply-apprenticeship)
  - [nationalcareers.service.gov.uk/](https://nationalcareers.service.gov.uk/)
- Let's see an example on the next slide!

# I want to pursue a career in...healthcare

Higher Education

Level 8

Level 7

Level 6

Level 5

Level 4

Degree in medicine, nursing, paramedic science etc

Healthcare Assistant Higher National Diploma

Apprenticeships in various healthcare roles

Secondary/  
Further Education

Level 3

Level 2

Level 1

A levels in science subjects

BTEC in Health & Social care

T Level in Health

Strong passes in GCSEs in English, Maths and Triple Science.

What work experience do I need?

# I want to study something to do with...**criminology, forensics or law**

Higher Education

- Level 8
- Level 7
- Level 6
- Level 5
- Level 4

Degree in criminology, forensics, law, psychology or a combination

Apprenticeships in law (solicitor), policing or the prison service

Secondary/  
Further Education

- Level 3
- Level 2
- Level 1

A levels in Biology, Law, Psychology

BTEC in Forensics and Criminal Investigation

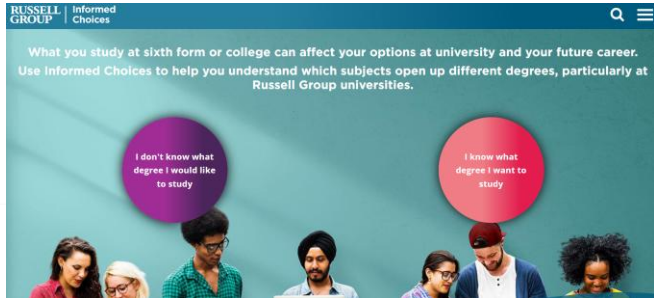
T Level in Legal Services

Strong passes in GCSEs in English, Maths and Science, as well as other essay writing subjects

What work experience do I need?

# I don't know what career I want to do or which subjects to study

- Pick subjects you enjoy and will do well in!
- Get ideas by taking a careers quiz online e.g. [prospects.ac.uk](https://prospepects.ac.uk).
- Keep your options open by choosing a variety of subjects. Lots of combinations of subjects can lead to lots of different degrees and careers.



MAKE  
—  
HAPPEN

# Researching and applying

## Task – researching your options

- Search for colleges and sixth forms near you - [makehappen.org/guide/clickable-map-of-sixth-forms-colleges-and-universities-in-essex/](https://makehappen.org/guide/clickable-map-of-sixth-forms-colleges-and-universities-in-essex/)
- Search for T levels courses near you - [tlevels.gov.uk/students](https://tlevels.gov.uk/students)
- Search for apprenticeships:
  - [gov.uk/apply-apprenticeship](https://gov.uk/apply-apprenticeship)
  - [notgoingtouni.co.uk](https://notgoingtouni.co.uk)
  - [ratemyapprenticeship.co.uk](https://ratemyapprenticeship.co.uk)
  - [essexopportunities.co.uk](https://essexopportunities.co.uk)
- Know what career/job you want to do? Use [nationalcareers.service.gov.uk/](https://nationalcareers.service.gov.uk/) to research how to get into that role.
- Know what uni course you might want to study? Use [informedchoices.ac.uk](https://informedchoices.ac.uk) and [ucas.com](https://ucas.com) to research what options you need to take after year 11.



# Record your choices in the table on your worksheet

Sixth form/College course or Apprenticeship name	What level is it? What GCSE grades do you need?	What skills will you need to demonstrate in your application?	Open day date	Application deadline

# Every college, sixth form, apprenticeship will have a different application process...



Application form and interview



Personal contact details



Predicted grades

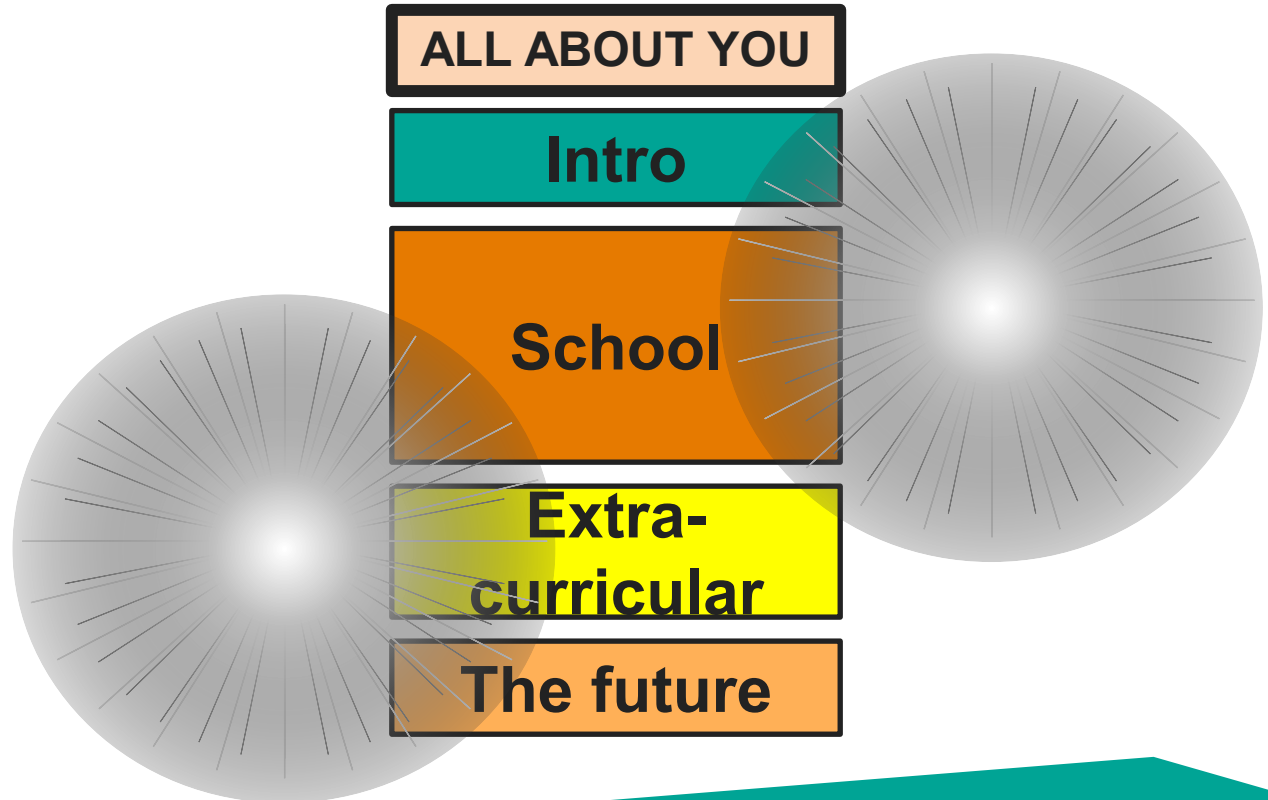


References from your teachers



Attendance, awards, behaviour, responsibilities

# | What is a personal statement?



ALL ABOUT YOU

Intro

School

Extra-  
curricular

The future



# Demonstrating your skills

You need to identify your key skills – then prove it!



**C**ontext + **A**ction + **R**esult

<b>Teamwork</b>	<b>Leadership</b>
<b>Communication</b>	<b>Time management</b>

**For each skill:**

**C**ontext – the situation

**A**ction – what YOU did

**R**esult – was it successful? Skills you used

# Task

Imagine you are writing your application or preparing for an interview.

Write a personal statement about yourself and your plans for the future. Include the following points:

- Why would you like to study this course at....?
- How will this course help with your future career ambitions?
- What interests do you have outside school?
- What skills do you have that make you suitable for this course?

I am applying to study \_\_\_\_\_ at \_\_\_\_\_ because...

# Application timeline

Start your new course or apprenticeship!

Year 11



**Sept to Dec:**  
open evenings at  
sixth forms and  
colleges

**Dec to March:**  
application  
deadlines

Interviews Taster  
days Receive  
offers

**August:** get your  
GCSE results



# | What next?

- **Research** courses at sixth forms, colleges and apprenticeships.
- **Attend** open evenings.
  - Which type of course and which level is it?
  - What grades do I need?
  - Which subjects and skills do I need?
  - Which career could this course lead you to?
- **Sign up** to apprenticeship vacancy job alerts
  - [www.gov.uk/apply-apprenticeship](http://www.gov.uk/apply-apprenticeship)
  - [www.careerfinder.ucas.com/jobs/apprenticeship/](http://www.careerfinder.ucas.com/jobs/apprenticeship/)



# | Useful links



[www.makehappen.org](http://www.makehappen.org)



<https://nationalcareers.service.gov.uk/>



<https://amazingapprenticeships.com/>

## T-LEVELS

<https://www.tlevels.gov.uk/students>

MAKE  
—  
HAPPEN

**THANK YOU!**  
**ANY QUESTIONS?**

**MAKE**  
—  
**HAPPEN**

**VISIT OUR WEBSITE:**  
**[WWW.MAKEHAPPEN.ORG](http://WWW.MAKEHAPPEN.ORG)**

**FOLLOW US ON:**

