



MAKE
—
HAPPEN

MAKE
YOUR FUTURE
HAPPEN.

Our Partner Universities



MAKE
—
HAPPEN

Why go to University?

| Where next after school?

FE at 6th Form or College:

A levels

BTECs

T levels

Apprenticeship



| Today



Start thinking about your next steps in education



Understand the benefits of going to university

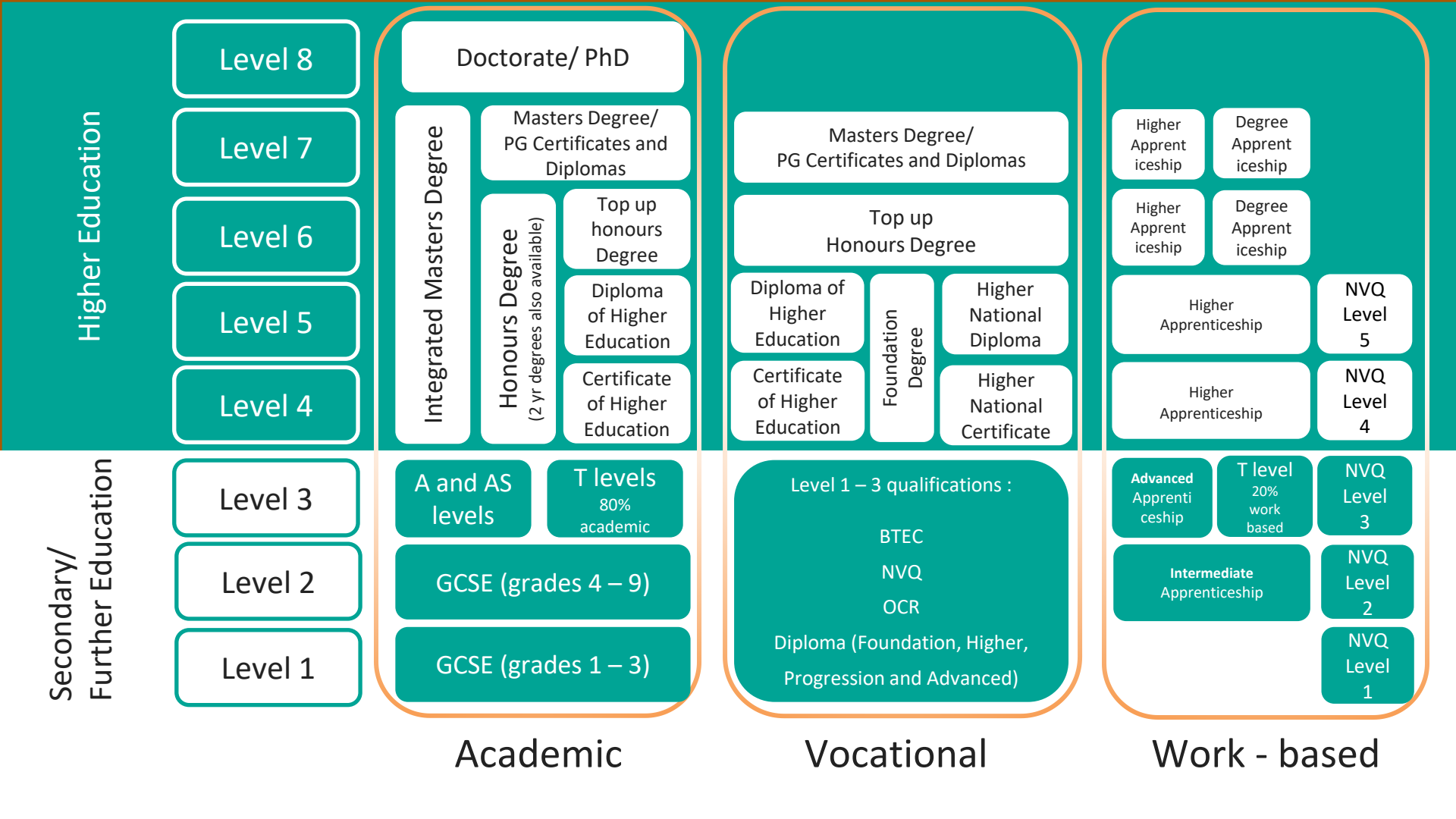


Gain an insight into what student life is like



| Your future options





Higher Education

Secondary/
Further Education

- Level 8
- Level 7
- Level 6
- Level 5
- Level 4

- Level 3
- Level 2
- Level 1

Academic

Doctorate/ PhD

Masters Degree/ PG Certificates and Diplomas

Integrated Masters Degree

Honours Degree (2 yr degrees also available)

Top up honours Degree

Diploma of Higher Education

Certificate of Higher Education

A and AS levels

T levels (80% academic)

GCSE (grades 4 – 9)

GCSE (grades 1 – 3)

Vocational

Masters Degree/ PG Certificates and Diplomas

Top up Honours Degree

Diploma of Higher Education

Certificate of Higher Education

Foundation Degree

Higher National Diploma

Higher National Certificate

Level 1 – 3 qualifications :

BTEC

NVQ

OCR

Diploma (Foundation, Higher, Progression and Advanced)

Work - based

Higher Apprenticeship

Degree Apprenticeship

Higher Apprenticeship

Degree Apprenticeship

Higher Apprenticeship

NVQ Level 5

Higher Apprenticeship

NVQ Level 4

Advanced Apprenticeship

T level (20% work based)

NVQ Level 3

Intermediate Apprenticeship

NVQ Level 2

NVQ Level 1

Academic

Vocational

Work - based

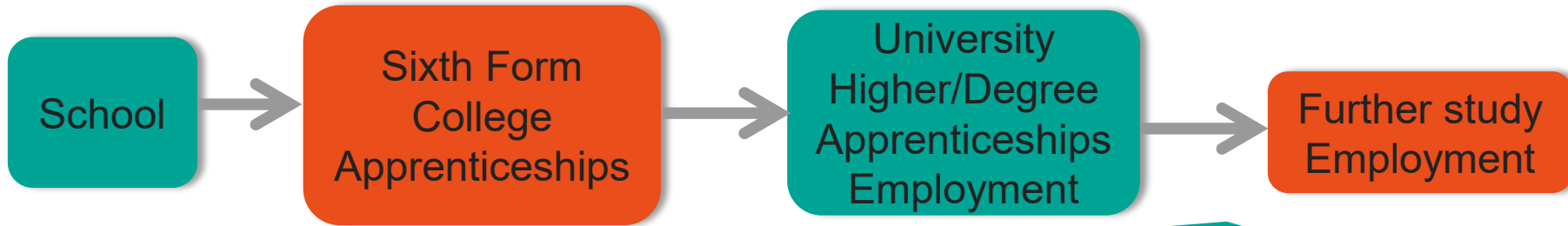
Starter

- Discuss in pairs:
- What is one thing you already know about university?
- What are you most curious about at university?
- Why might someone decide to go to university?

Share back as a group

| What is university?

- A place where you study towards a higher-level qualification - this is why it is called **Higher Education**.
- Usually....
 - Apply during sixth form or college when you are 17 or 18
 - 3 or 4 years
 - Leads to a degree



MAKE
HAPPEN

What do you think of when you think of university?

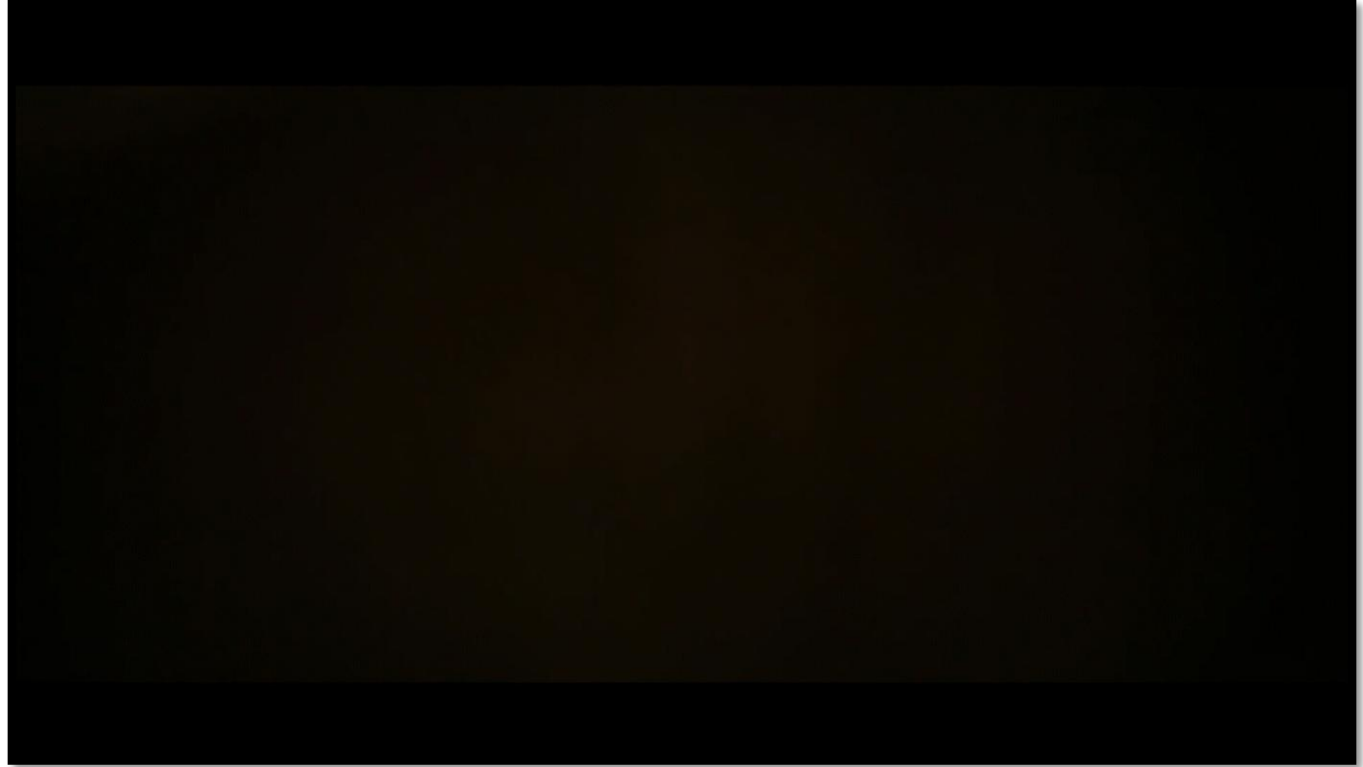
Whatever you
need it to be...



What is University?



| Why go to University?



<https://vimeo.com/165261094>

| Why go to University?



| Uni vs. School

What do you think the differences are between school and university?

- Usually, only study 1 or 2 subjects. Choose from over 50,000 subjects!
- A lot bigger! Bigger buildings and lots more students.
- You can choose to live at uni.
- Varied timetables.
- Much more freedom and choice.



Why go to University?

JOB PROSPECTS

MEET NEW PEOPLE

TRANSFERABLE SKILLS

EXPERIENCES

SOCIETIES

STUDENTS' UNION

LIFE SKILLS

TRAVELLING

Study a subject you enjoy!

- Over **50,000** different undergraduate courses available.
- Course may be influenced by your career plans - for example, nursing, dentistry, teaching
- Course might not lead to a specific career but allows you to access lots of different careers.
- You may be able to study the same course through a higher or degree level apprenticeship route – always consider both options

Example courses



Is it a real degree?



Baking Science and Technology
London South Bank University

Baking



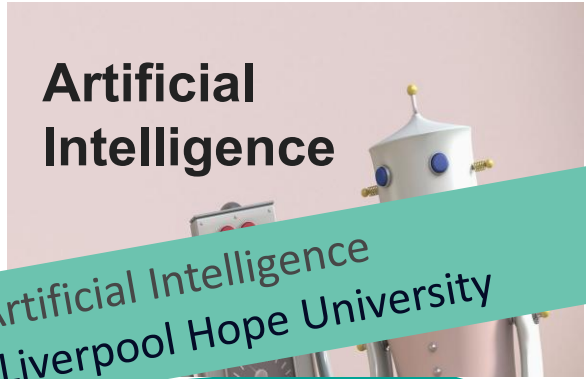
FdSC Degree in Surf Science
Cornwall College

Surfing



**Ethical
Hacking**

Ethical Hacking and Cyber Security
Coventry University



**Artificial
Intelligence**

Artificial Intelligence
Liverpool Hope University

| Job Prospects

- Graduates earn around £11,500 more per year than non-graduates
- Around **60%** of graduate employers will recruit graduates from any degree discipline
- Graduates have higher employment rates and are more likely to work in high-skilled jobs than non-graduates



Travelling

- Study abroad
- Experience a different culture
- Learning a new language and transferable skills
- Great travel and language experience for the future
- Boost your employability



Ready to take off?

Where would you fancy going on your degree?



Transferable Skills

Written and oral communication/presentation skills.

Ability to scan texts, analyse large amounts of information and apply it quickly.

Organisational skills- high workload means you can plan and prioritise well to meet deadlines.

Be able to influence or persuade others to your point of view.

Independent research.

Organise material from a range of sources and use it to develop well argued, evidence-based conclusions.

Understanding of different industries, sectors of society and the different kinds of business.

Commitment and Dedication- seen as a competitive, demanding and academic degree.

Life Skills

- Learning how to cook
- Doing your own washing/ironing/cleaning
- Managing your own money
- Independent learning skills
- Social skills



Sports & Societies

- There are a wide range of activities to suit everyone
- Continue a hobby you had before university
- Try out a new sport or interest
- Make lots friends that have the same interest as you
- Good exercise
- Add experience to your CV i.e teamwork and communication skills



Clubs and Societies



Part Time Work Opportunities

- Student ambassador for your university
- Working on campus, e.g Students Union
- Frontrunner
- Internship
- Town in which your university is located



Careers and Employability

Ways University can offer you work experience in your subject:

- ✓ Placements
- ✓ Internships
- ✓ Final year project
- ✓ Year in industry

Ways University can help you find a job/ support your career:

- ✓ Careers service
- ✓ Careers fairs
- ✓ Jobs at the Students' Union
- ✓ Support after you graduate



| Studying

Studying at university can differ to school and college:

Contact time

- Lectures
- Seminars
- Tutorials
- Labs

Independent learning

- Study in the library
- Study at home
- Work with friends in group work spaces at university

**MAKE
HAPPEN**

	MON	TUE	WED	THU	FRI
9:00-10:00		Cold War Lecture	VISIT DAY OR MEETING	ESSAY	
10:00-11:00	SEMINAR READING	TYPE NOTES			Police Seminar
11:00-12:00		RESEARCH		Making History Lecture *	TYPE NOTES
12:00-1:00				LUNCH	Making History Seminar *
1:00-2:00	Special Relationship Lecture	LUNCH		GROUP WORK	RESEARCH
2:00-3:00	Big Brother Lecture	LIBRARY		Cold War Seminar	ESSAY
3:00-4:00	COMMON ROOM	Big Brother Seminar		Police Lecture	SOCIAL
4:00-5:00	Special Relationship Seminar	SOCIAL			



Higher Education Quiz

Let's test your knowledge!



At university, when you are absent your parents/carers will be contacted. True or false?

True

False

How long is the average university degree?

2 years

3 years

4 years

5 years

Anthropology is the study of...

Bugs

Wine

Trees

Humans

You need to do A Levels to go to university. True or false?

True

False

Where do you live whilst at university?

Away from home (e.g. on the university campus or in a house/flat in town close to the university)

At home with your family and travel in to campus

At home with your family doing online learning

Any of the above – it's your choice

What did Natalie Portman (*Thor*, *Star Wars*) study at university?

Psychology

Business

Drama



You can achieve a degree through a university by doing an apprenticeship. True or false?

True

False

What is the maximum cost of one year's study (tuition) at university?

£3,500

£5,000

£9,535

£11,750

Next steps

- Research what you can do after year 11 and how they can lead to university courses.
- Get to know your next steps at each stage of school/college makehappen.org/guide/planning-ahead/
- Why not try out a subject that you could study at uni? Work through our subject tasters in your own time makehappen.org/events/
- Hear it direct from uni students at makehappen.org/event/watch-our-students-life-talks-on-youtube/
- Read our short guides at makehappen.org/guides/

MAKE
—
HAPPEN

VISIT OUR WEBSITE:
WWW.MAKEHAPPEN.ORG

FOLLOW US ON:

